



EFFE 3TI
PACKAGING TECHNOLOGIES

PROTECTING YOUR PRODUCTS ... AN EASY GAME

SPINNY S300 / S350

SEMI-AUTOMATIC WRAPPING MACHINE



PACKAGING
TECHNOLOGIES
MADE IN ITALY



EFFE 3 TI srl | GATTINARA (VC) ITALY | Tel. +39 0163 828911 | Fax +39 0163 828990
info@effe3ti.com | www.effe3ti.com

EFFE 3 TI PRESENTS THE SEMI-AUTOMATIC WRAPPING MACHINE

SPINNY S300 and SPINNY S350

THE USER FRIENDLY, AFFORDABLE, RELIABLE AND FULLY CUSTOMIZABLE MACHINE THAT WILL LET YOU REACH HIGH STANDARDS IN PACKAGING.



MAIN FEATURES

With its 10 wrapping programs, is equipped with a motorized pre-stretch system that allows a sensible saving of film while wrapping.

The machine has 10 password protected programs and, on request, is also available with 5 pre-set programs.

- Pre-stretch up to 300%
- Pallet height detection with photocell
- Distance between column and turntable 500 mm
- Rotating table movement regulated by variable frequency drive
- Rotating table stop in position controlled by sensor
- Variable speed of film carriage completely customizable
- Working cycle controlled by PLC and electronic card

*Extremely customizable and available with many optionals to fit all the customer's needs. Versions **TP** (hand pallet jack), **PRESS** (top press), **DUO** (double table), **TOUCH** (touch screen control panel, standard in S350), **STAINLESS STEEL**, **DUAL MOTORS** (with Dual Motor Pre-stretch system) or for **DOORS & WINDOWS** packaging are **only few** of the customizations available for SPINNY S300.*

PRE-STRETCH SYSTEM = ECONOMIC ADVANTAGE

All models are equipped with an high-performance **MOTORIZED PRE-STRETCH SYSTEM**.

The power pre-stretch is a special device which allows the best utilization of the stretch film quantity; moreover, it permits to wrap light and unsteady pallets that couldn't be wrapped with different frictioning systems.

The stretch film is supplied in the right quantity by the rollers that are operated by a motor, which is controlled by an electronic system that measures the speed and keeps the film tension constant on the whole pallet's surface.

The motorized pre-stretch system, allows an efficiency of film up to **300%**.

FILM SAVING



SPINNY DUAL MOTOR GIVES YOU EVEN MORE!

The **DUAL MOTOR** version is designed to let you save even more film, obtaining more economic advantages.

Based on the same principle of the single motor version, with the **DUAL MOTOR** system, SPINNY S300 offers variable stretch factor up to **400%**!

FILM SAVING



SPINNY S350

TOUCH-SCREEN CONTROL PANEL

YOUR NEXT WRAPPING MACHINE ... GOING ONE STEP BEYOND



**CONTACT US FOR INFO
ON ALL VERSIONS AND ACCESSORIES AVAILABLE
WITH **SPINNY S300** AND **SPINNY S350****

📞 **CALL +39.0163.828911**
or visit
🖱️ www.effe3ti.com

TECHNICAL DATA

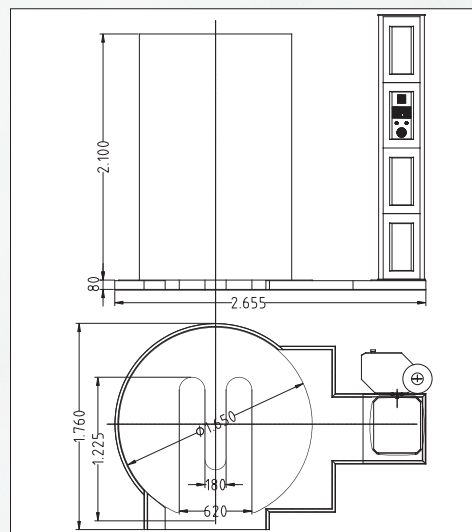
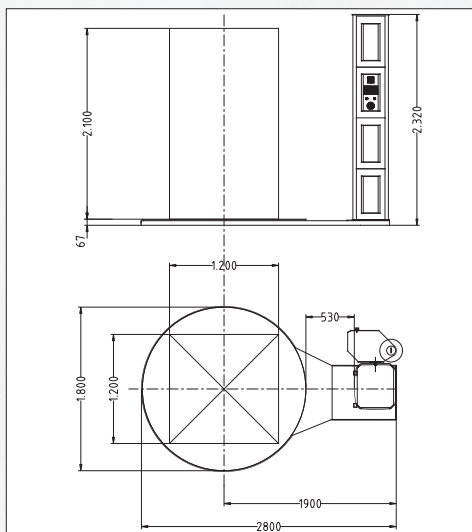
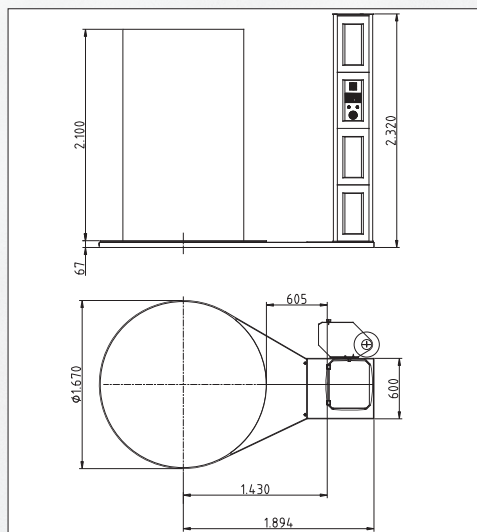
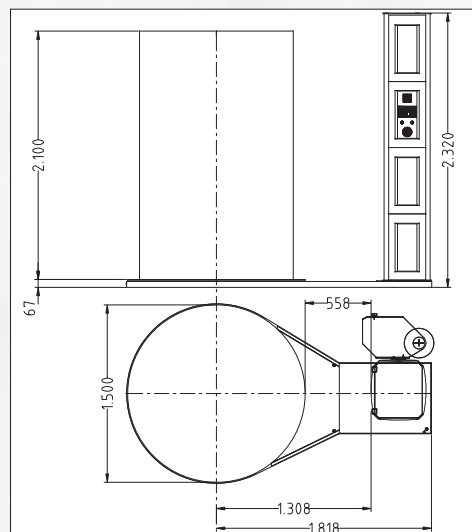
- The standard machine is designed to wrap palletted loads with stretch plastic film having the dimension up to 1200 mm (L) X 800 mm (W), with a load capacity of 1200 kg.
- The turntable is also available with a diameter of 1500 mm, 1650 mm, 1800 mm and 2200 mm with a load capacity of 2000 kg.
- The column can be furnished to wrap pallets with heights of 2100 mm, 2600 mm and 3100 mm.
- Table rotation speed and film carrier speed are regulated by inverter (turntable can rotate at a speed from 5 to 10 RPM).

ELECTRICAL SUPPLY

- Tension: 230 V single phase or, on demand, 400-415 V triple phase $\pm 10\%$
- Frequency: 50 Hz
- Installed power: 1,3 kW
- Auxiliary energy supply: 24 V DC

FILM (LLDPE) AND COIL CHARACTERISTICS

- Thickness: 15 \div 40 μm
- Advised thickness: 20 μm
- Internal coil diameter: 76 mm
- Height: 500 mm
- Maximum film roll weight: 16 kg
- Maximum external coil diameter: 250 mm



You Tube



www.effe3ti.com

www.youtube.com/effe3ti
www.facebook.com/effe3ti

